



# New Era® Ladies Tri-Blend Fleece Crop Crew LNEA514

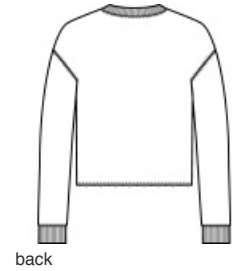
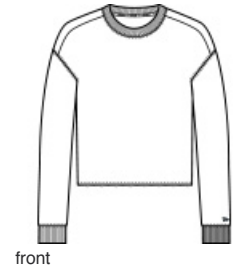


With a statement-making crop hem, this midweight crew is as comfortable in the stands as it is on the street.

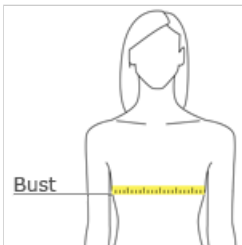
- 7.1-ounce, 55/34/11 cotton/poly/rayon fleece
- Debossed New Era neck taping
- Heat transfer label for tag-free comfort
- Rib knit neck and cuffs
- Raised silicone New Era flag logo at left cuff
- High-crop, raw-edge hem sits at hip

### CARE INSTRUCTIONS

Machine Wash Cold With Like Colors. Do Not Use Fabric Softener. Only Non-Chlorine Bleach When Needed. Tumble Dry Low. Remove Promptly. Cool Iron If Necessary.



### HOW TO MEASURE



**BUST**  
Measure under the arm and around the fullest part of the bust with arms down, keeping tape horizontal.

### SIZE CHART

	XS	S	M	L	XL	2XL	3XL	4XL
Size	2	4/6	8/10	12/14	16/18	20/22	24/26	28/30
Bust	32-34	35-36	37-38	39-41	42-44	45-47	48-51	52-55

### COLOR INFORMATION



Black Heather  
PMS BLACK C



Shadow Grey  
Heather  
PMS COOL GRAY  
10C



Soft Beige  
PMS 7527C